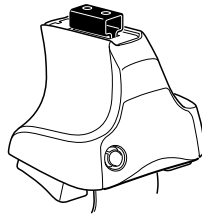


Kit 1402

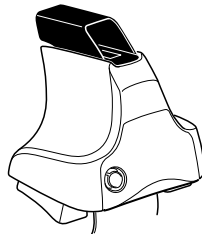
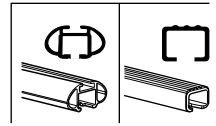
SUZUKI Escudo, 5-dr SUV, 05-*

SUZUKI Grand Vitara, 5-dr SUV, 05-*

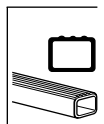
* Without railing



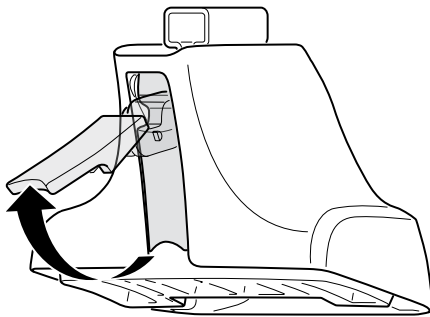
754 Rapid System
480R Rapid Traverse (North America)



480 Traverse (North America)



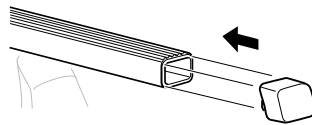
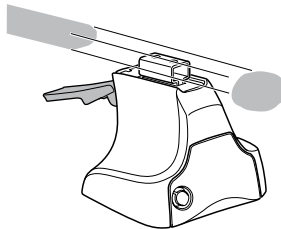
1



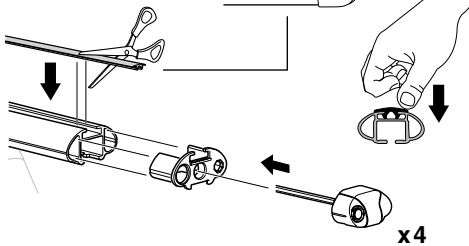
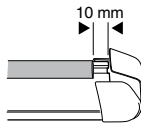
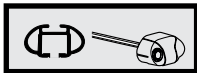
2



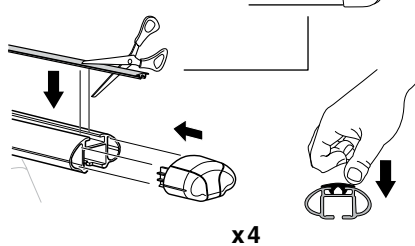
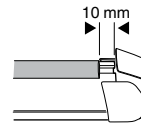
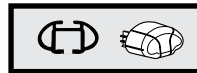
754 Rapid System
480R Rapid Traverse
(North America)



x4



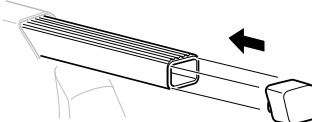
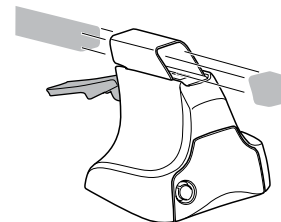
x4



x4



480 Traverse
(North America)

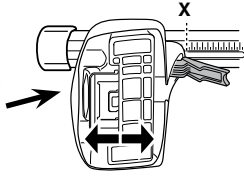


x4

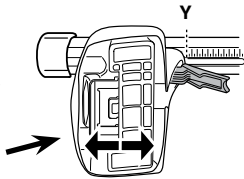
3



754 Rapid System



	X
SUZUKI Escudo, 5-dr SUV, 05-	42,5
SUZUKI Grand Vitara, 5-dr SUV, 05-	42,5



	Y
SUZUKI Escudo, 5-dr SUV, 05-	38,5
SUZUKI Grand Vitara, 5-dr SUV, 05-	38,5

3

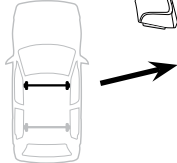


480R Rapid Traverse

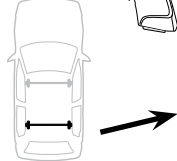


480 Traverse

(North America)

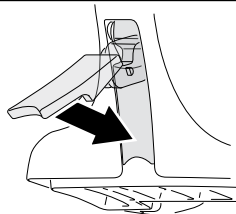


	X inch	X mm
SUZUKI Escudo, 5-dr SUV, 05-	42 ³/₈ "	1076 mm
SUZUKI Grand Vitara, 5-dr SUV, 05-	42 ³/₈ "	1076 mm



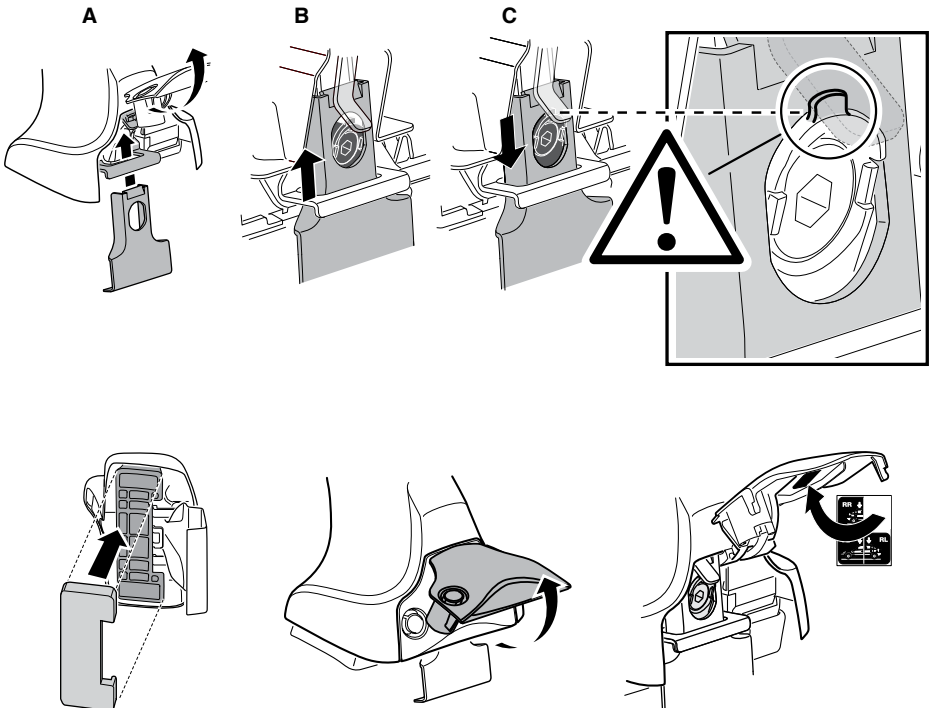
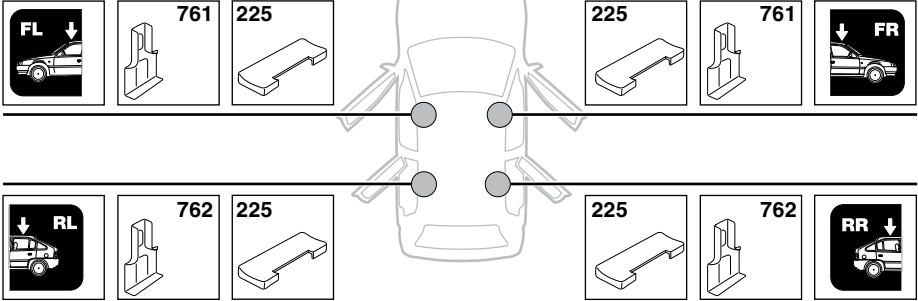
	Y inch	Y mm
SUZUKI Escudo, 5-dr SUV, 05-	40 ³/₄ "	1036 mm
SUZUKI Grand Vitara, 5-dr SUV, 05-	40 ³/₄ "	1036 mm

4

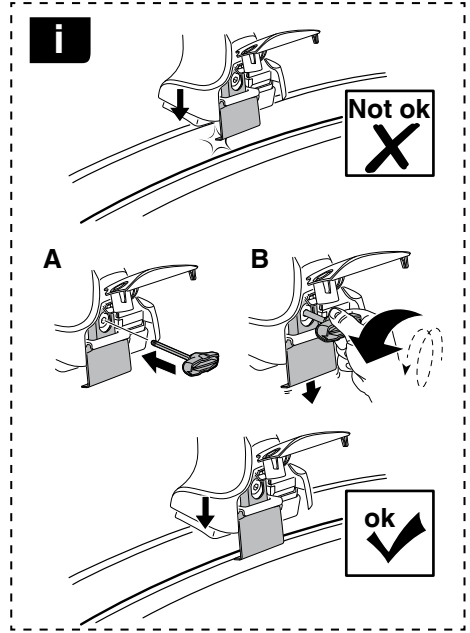
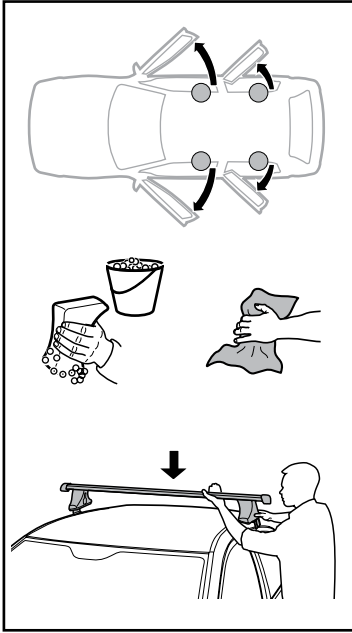


5

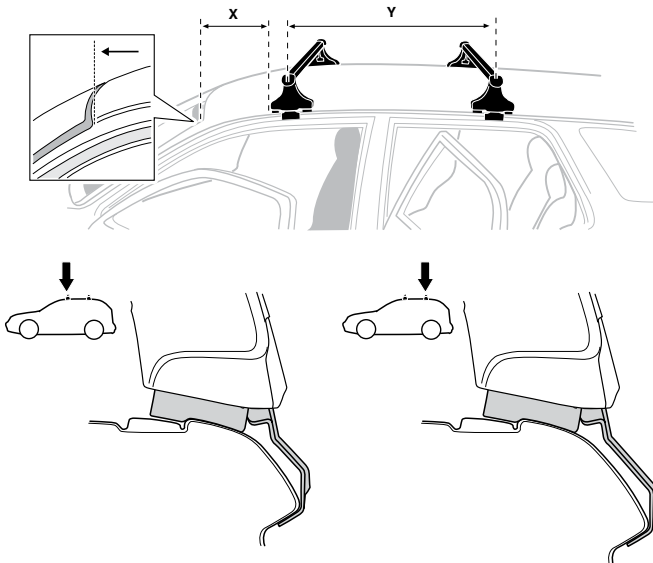
SUZUKI Escudo, 5-dr SUV, 05–
SUZUKI Grand Vitara, 5-dr SUV, 05–



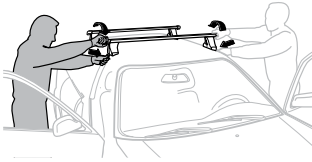
6



	X mm	Y mm	X inch	Y inch
SUZUKI Escudo, 5-dr SUV, 05-	265 mm	715 mm	10 ³ / ₈ ''	28 ¹ / ₈ ''
SUZUKI Grand Vitara, 5-dr SUV, 05-	265 mm	715 mm	10 ³ / ₈ ''	28 ¹ / ₈ ''



7



GB/US Tighten alternately
 D Die Schrauben abwechselnd anziehen
 F Serrer alternativement chaque côté
 NL Afwisselend aan de linker- en de rechterkant aandraaien
 I Alternare il serraggio delle viti
 E Apertar alternativamente
 PT Aperte alternadamente
 S Dra åt växelvis
 FIN Kierrä vuorotellen
 EST Pinguldage vaheldumisi
 LAT Pieļieciet pamišus
 LIT Užsukinėkite pakaitomis
 PL Śruby dokręcaj naprzemiennie
 RU Затягивайте попеременно

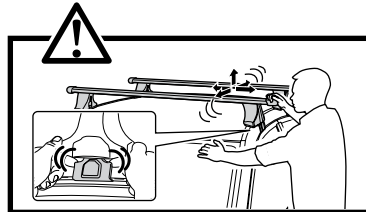
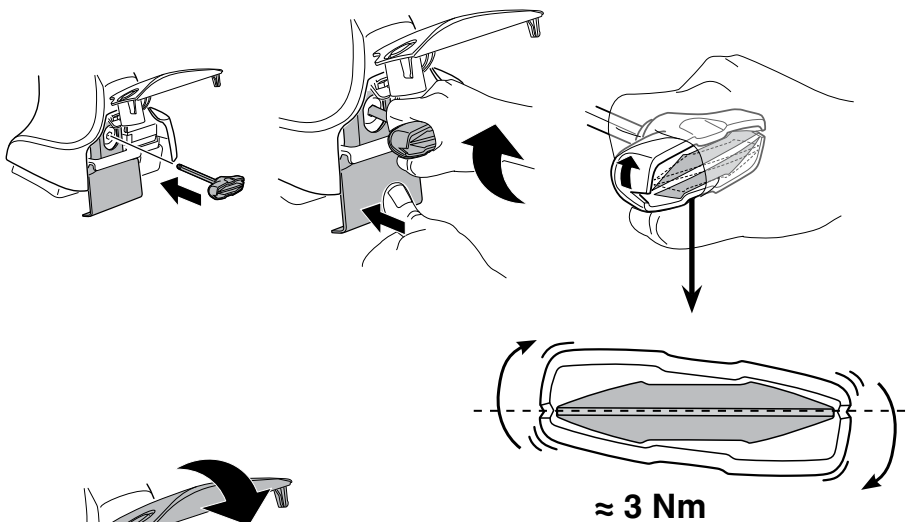
CZ Pokręťta bagażnika dokręcaj naprzemiennie.
 SK Dofahajte striedavo
 SLO Privijajte izmenično.
 HR Naizmjerno zategnite
 HU Egymástól függetlenül szorítandó
 GR Σφιγίγεται εναλλάξ
 TR Dönüşümlü sıkın

中文 交替拧紧

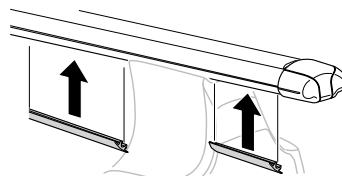
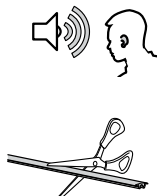
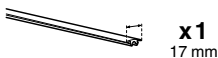
한국어 번갈아 가며 조이십시오.

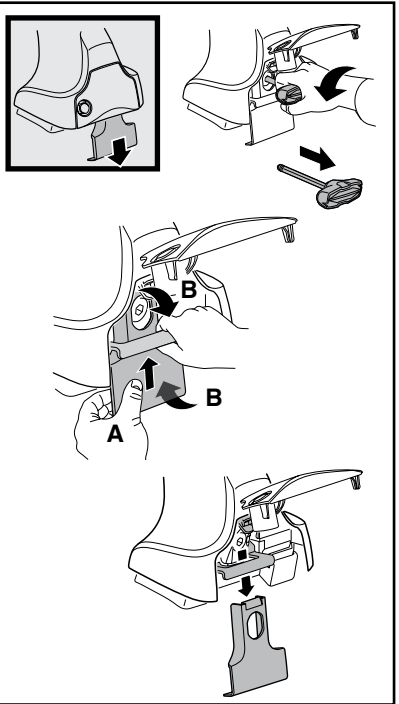
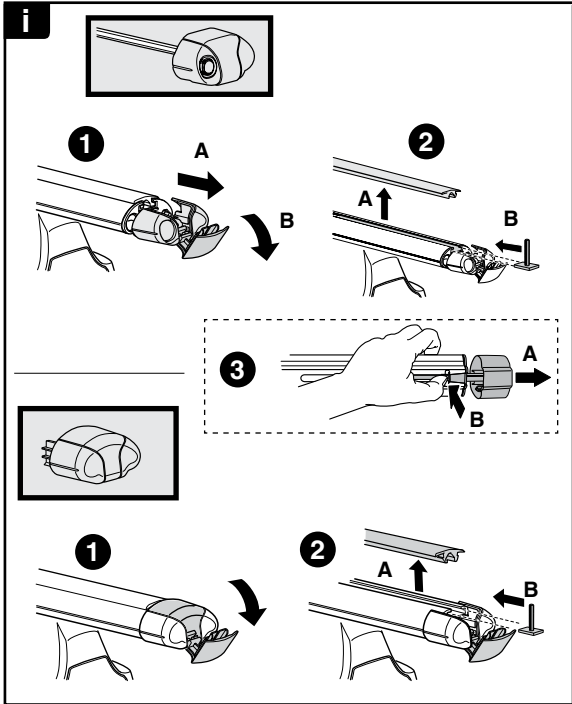
日本語 交互に締め付けてください。

ไทย ชันในแบบสลับ

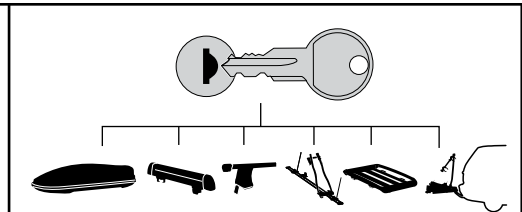


8





THULE
SWEDEN
**ONE
KEY
SYSTEM**



- 544** (x4)
 - 596** (x6)
 - 588** (x8)
 - 510** (x10)
 - 452** (x12)
- NA
EUR
ASIA

