



## Thule Rapid System Kit 1041

# > Instructions

TOYOTA Starlet, 3-dr Hatchback, 96-99

The diagram is divided into several sections:

- Top Left:** An information icon 'i' and a warning triangle. An arrow points to a person reading a manual. Below is a pencil writing on a document.
- Top Middle:** Two manuals are shown. Manual 'B' (Thule Rapid System Kit 1041) has an arrow pointing to Manual 'A' (Thule Rapid System 754). Manual 'A' has an arrow pointing to a Thule Rapid System 754 component.
- Top Right:** A weight calculation box:  
$$\begin{array}{r} \text{xx kg} \\ \text{xx lbs} \end{array} + \begin{array}{l} \text{7 kg} \\ \text{15,4 lbs} \end{array} \\ \hline = \begin{array}{l} \text{Max.} \\ \text{50 kg} \end{array} \quad \begin{array}{l} \text{Max.} \\ \text{110 lbs} \end{array}$$
- Bottom Left:** A warning triangle, three manuals (A, B, and a 'Safety' manual), and a person reading a manual.
- Bottom Right:** A warning triangle, a car with arrows indicating load placement on the roof, and a speedometer graphic with a warning triangle. The speedometer has markings for 40 km/h (25 Mph), 80 km/h (50 Mph), and 130 km/h (80 Mph).

ISO 11154-E

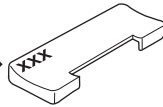
141041  
C.20150501  
519-1041-01

Bring your life  
thule.com

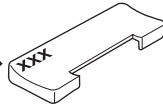


107 x4

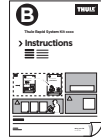
06 x2



15 x2



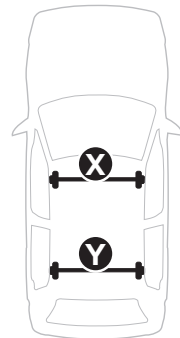
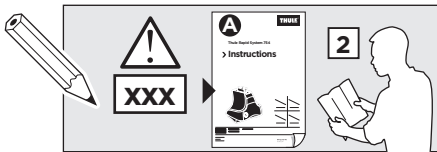
x1



x1

1

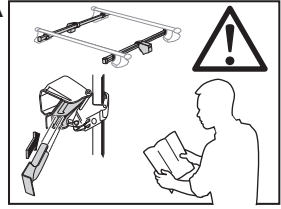
	X (scale)	X (mm)	X (inch)
<b>TOYOTA Starlet, 3-dr Hatchback, 96-99</b>	<b>25,5</b>	<b>906</b>	<b>35 <sup>5</sup>/<sub>8</sub></b>



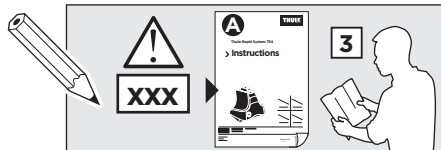
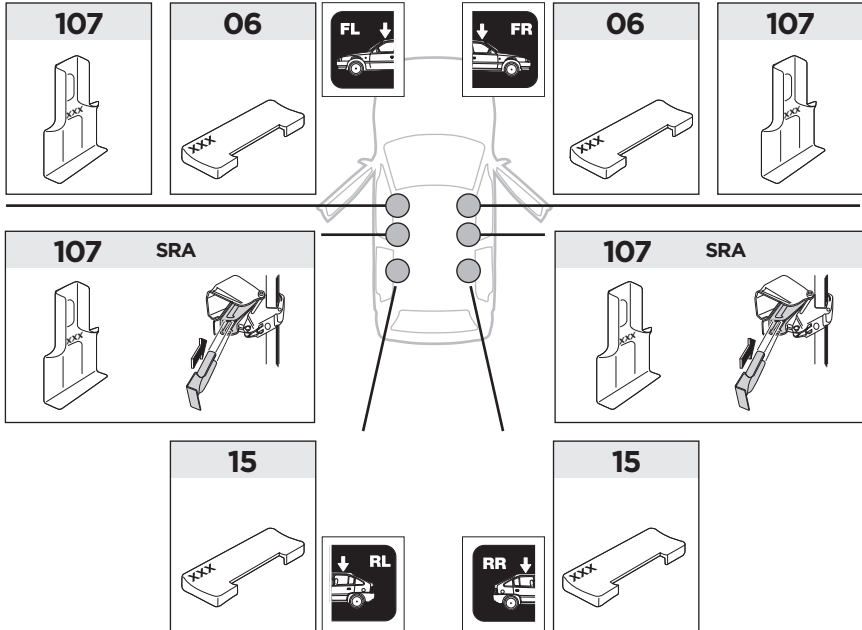
	Y (scale)	Y (mm)	Y (inch)
<b>TOYOTA Starlet, 3-dr Hatchback, 96-99</b>	<b>22</b>	<b>871</b>	<b>34 <sup>1</sup>/<sub>4</sub></b>

2

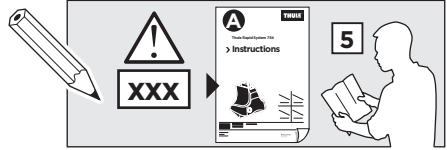
SRA



TOYOTA Starlet, 3-dr Hatchback, 96-99



3



	W (mm)	Z (mm)	Y (mm)	W (inch)	Z (inch)	Y (inch)
<b>TOYOTA Starlet, 3-dr Hatchback, 96-99</b>	<b>180</b>	<b>700</b>	<b>380</b>	<b>7 1/8</b>	<b>27 1/2</b>	<b>15</b>

