



## Thule Rapid System Kit 1856

# > Instructions

FIAT 500, 3-dr Hatchback, 07-/\*11-

\*North America

The diagram is divided into four main sections:

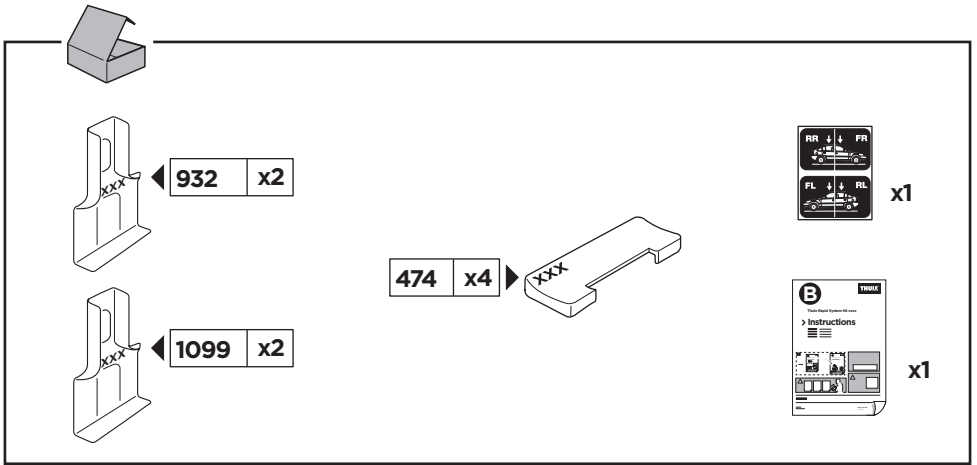
- Top Left:** A dashed box containing an information icon (i), a warning triangle, an arrow pointing to document B (Thule Rapid System Kit 1856 Instructions), a person reading, a pencil writing on a form, and an arrow pointing to document A (Thule Rapid System 754 Instructions).
- Top Right:** A weight calculation diagram showing a bag labeled 'xx kg / xx lbs' plus a rack labeled '7 kg / 15,4 lbs' and two screws labeled '3 kg / 6,6 lbs'. Below this, a box states: **Max. 50 kg / 110 lbs**.
- Bottom Left:** A row of three documents: A (Thule Rapid System 754 Instructions), B (Thule Rapid System Kit 1856 Instructions), and a Security document. A person is shown reading document B.
- Bottom Right:** A diagram of a car with arrows indicating the rack installation. A speedometer shows a warning triangle between 40 km/h (25 Mph) and 80 km/h (50 Mph), with a maximum limit of 130 km/h (80 Mph).

ISO 11154-E

141856

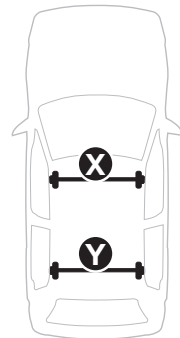
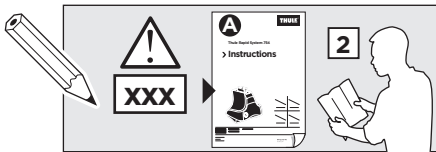
C.20170228  
519-1856-01

Bring your life  
thule.com



**1**

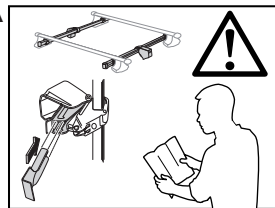
	X (scale)	X (mm)	X (inch)
FIAT 500, 3-dr Hatchback, 07-/*11-	34,5	996	39 <sup>1</sup> / <sub>4</sub>



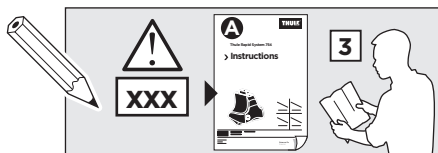
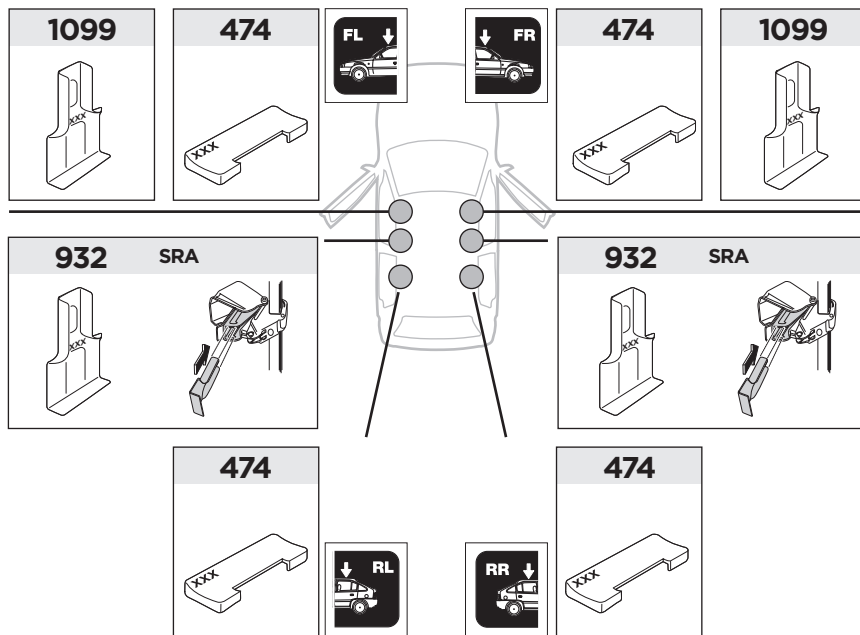
	Y (scale)	Y (mm)	Y (inch)
FIAT 500, 3-dr Hatchback, 07-/*11-	28,5	936	36 <sup>7</sup> / <sub>8</sub>

2

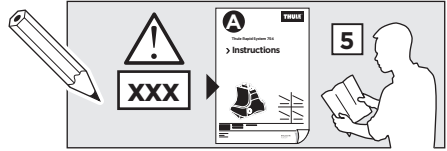
SRA



FIAT 500, 3-dr Hatchback, 07-/ \*11-



3



	W (mm)	Z (mm)	Y (mm)	W (inch)	Z (inch)	Y (inch)
<b>FIAT 500, 3-dr Hatchback, 07-/*11-</b>	<b>250</b>	<b>600</b>	<b>270</b>	<b>9 7/8</b>	<b>23 5/8</b>	<b>10 5/8</b>

