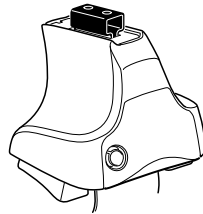


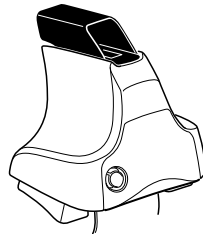
Kit 1559

HONDA Accord, 2-dr Coupé, *08–

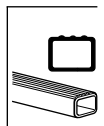
*North America



754 Rapid System
480R Rapid Traverse (North America)



480 Traverse (North America)



xx kg / xx lbs + 7 kg / 15,4 lbs =

 3 kg / 6,6 lbs

Max. 40 kg

Max. 88 lbs

80 km/h 130 km/h

 50 Mph 80 Mph

 40 km/h 25 Mph

km/h

Mph

THULE

Kit XXXX

instructions

x1

x4

754 Rapid System

x4

480R Rapid Traverse (North America)

x4

754 Rapid System

480R Rapid Traverse (North America)

x1

x4

x4

x4

480 Traverse (North America)

x2

x2

23 mm

x2

x2

x4

x4

x1

17 mm

x2

23 mm

x2

x2

x4

(North America)

x2

23 mm

x2

x2

320

x2

457

x2

06

x4

x1

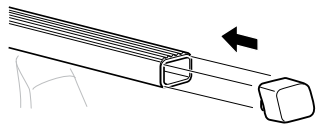
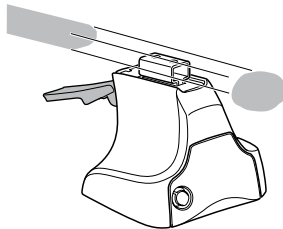
1



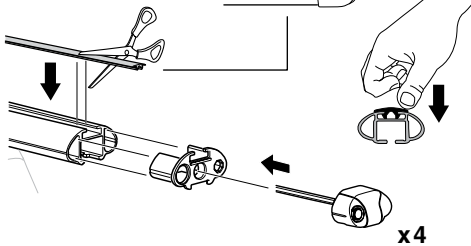
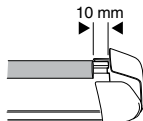
2



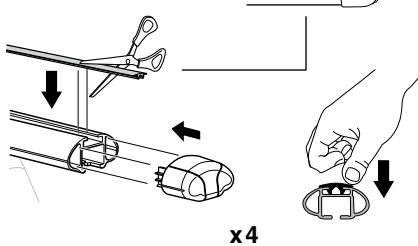
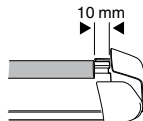
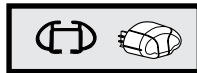
754 Rapid System
480R Rapid Traverse
(North America)



x4



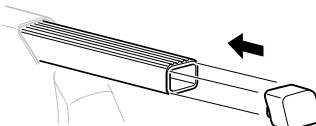
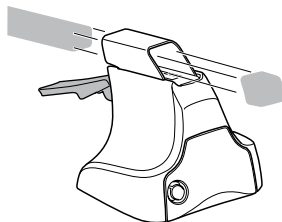
x4



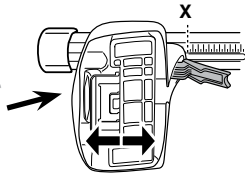
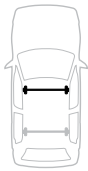
x4



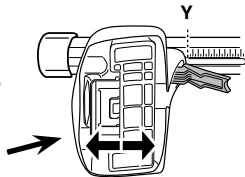
480 Traverse
(North America)



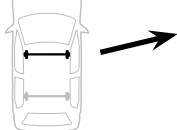
x4

3**754** Rapid System

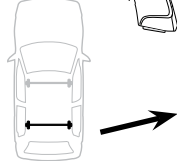
	X
HONDA Accord, 2-dr Coupé, *08-	41,5



	Y
HONDA Accord, 2-dr Coupé, *08-	39

3**480R** Rapid Traverse**480** Traverse**(North America)**

	X inch	X mm
HONDA Accord, 2-dr Coupé, *08-	42"	1066 mm



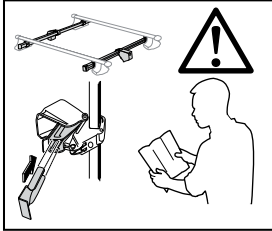
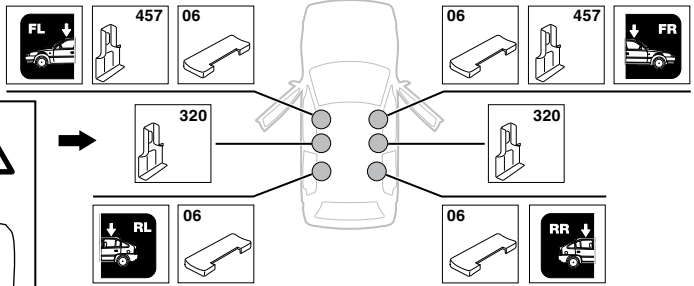
	Y inch	Y mm
HONDA Accord, 2-dr Coupé, *08-	41"	1041 mm

4

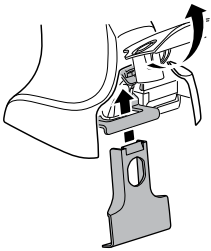
5

HONDA Accord, 2-dr Coupé, *08-

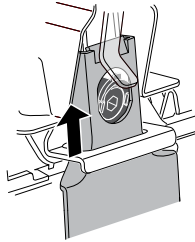
SRA



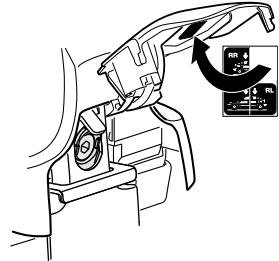
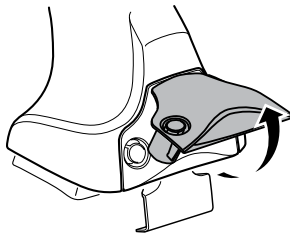
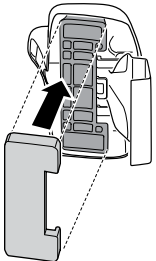
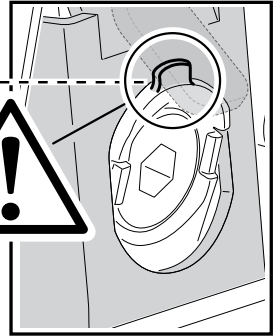
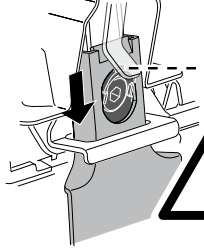
A



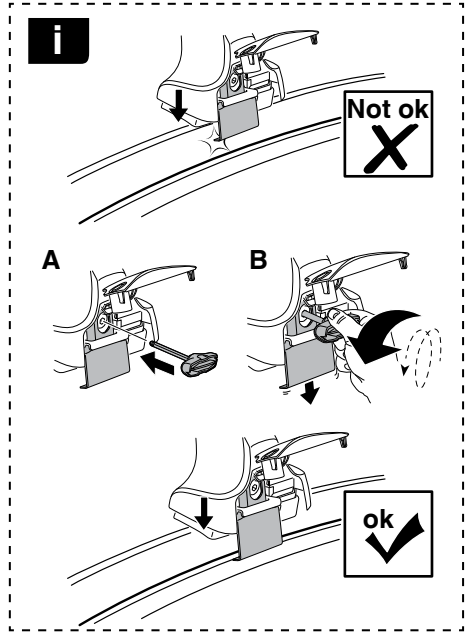
B



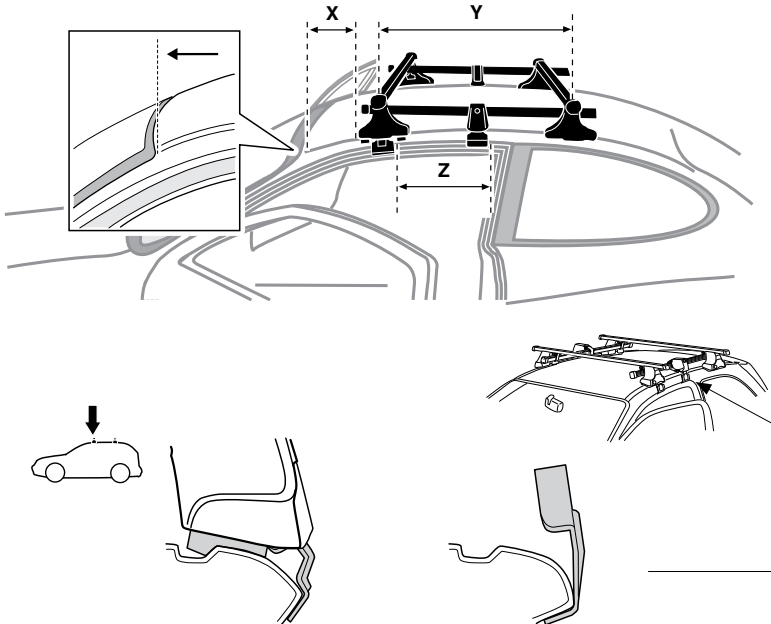
C



6



	X mm	Y mm	Z mm	X inch	Y inch	Z inch
HONDA Accord, 2-dr Coupé, *08-	255 mm	711 mm	305 mm	10"	28"	12"



7



GB/US Tighten alternately
 D Die Schrauben abwechselnd anziehen
 F Serrer alternativement chaque côté
 NL Afwisselend aan de linker- en de rechterkant aandraaien
 I Alternare il serraggio delle viti
 E Apertar alternativamente
 PT Aperte alternadamente
 S Dra åt växelvis
 FIN Kierrä vuorotellen
 EST Pinguldage vaheldumisi
 LAT Pieļieciet pamišus
 LIT Užsukinėkite pakaitomis
 PL Śruby dokręcaj naprzemiennie
 RU Затягивайте попеременно

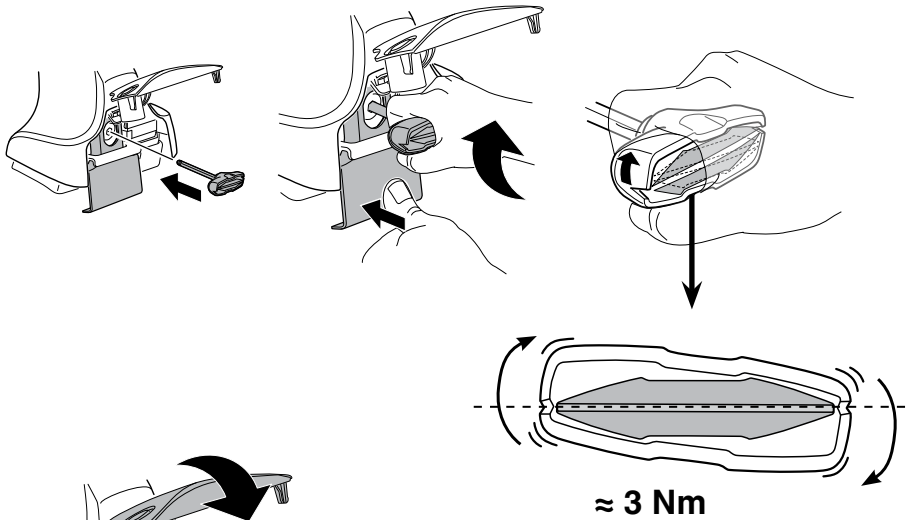
CZ Pokręťta bagażnika dokręcaj dokręcaj naprzemiennie.
 SK Dofahajte striedavo
 SLO Privijajte izmenično.
 HR Naizmjerno zategnite
 HU Egymástól függetlenül szorítandó
 GR Σφιγίγτες εναλλάξ
 TR Dönüşümlü sıkın

中文 交替拧紧

한국어 번갈아 가며 조이십시오.

日本語 交互に締め付けてください。

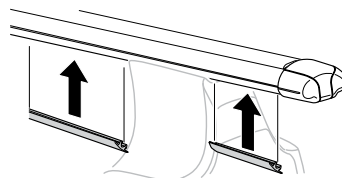
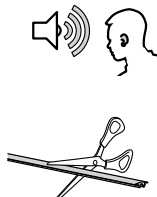
ไทย ชันในแบบสลับ



8

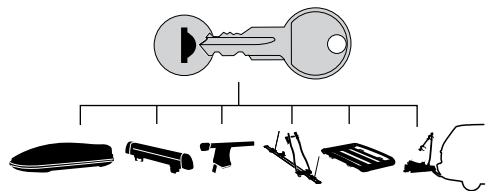


x1
17 mm



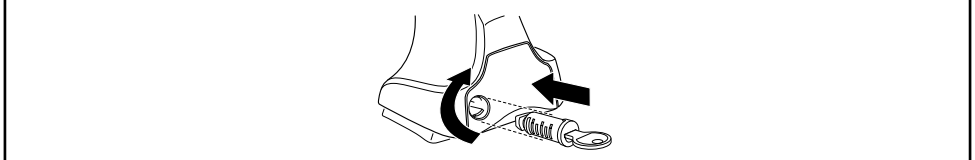


THULE
SWEDEN
**ONE
KEY
SYSTEM**



	544		(x4)
	596		(x6)
	588		(x8)
	510		(x10)
	452		(x12)

NA
EUR
ASIA



WW ▶ Thule Sweden AB, Box 69, 330 33 Hillerstorp, SWEDEN
NA ▶ Thule Inc., 42 Silvermine Road, Seymour, Connecticut 06483, USA

info@thule.com
customer.service@thule.com

www.thule.com