



## Thule Rapid System Kit 1098

# > Instructions

HONDA Logo, 3-dr Hatchback, 96-01

HONDA Logo, 5-dr Hatchback, 96-01

The diagram is divided into three main sections:

- Document Flow:** A dashed box contains an information icon (i), a warning triangle, and a person reading. An arrow points from the warning triangle to document 'B' (Thule Rapid System Kit 1098). Another arrow points from document 'B' to document 'A' (Thule Rapid System 754). A pencil is shown writing on a form below document 'A'.
- Weight Calculation:** A scale icon is next to 'xx kg / xx lbs'. An arrow points to a rack labeled '7 kg / 15,4 lbs'. A plus sign follows, then an arrow points to two screws labeled '3 kg / 6,6 lbs'. An equals sign leads to a box containing 'Max. 75 kg' and 'Max. 165 lbs'.
- Speed Restrictions:** A warning triangle is next to a car with arrows pointing to the roof rack. A speedometer shows a warning zone between 40 km/h (25 Mph) and 80 km/h (50 Mph). A higher speed zone is marked up to 130 km/h (80 Mph).

ISO 11154-E

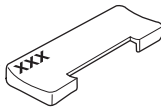
141098

C.20150501  
519-1098-01

Bring your life  
thule.com



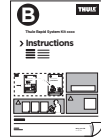
07 x4



150 x4



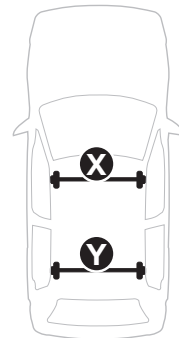
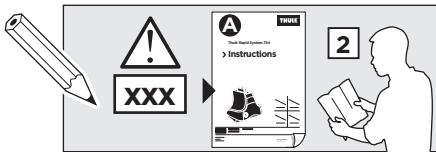
x1



x1

1

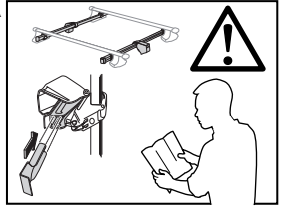
	X (scale)	X (mm)	X (inch)
<b>HONDA Logo</b> , 3-dr Hatchback, 96-01	25	901	35 1/2
<b>HONDA Logo</b> , 5-dr Hatchback, 96-01	24,5	896	35 1/4



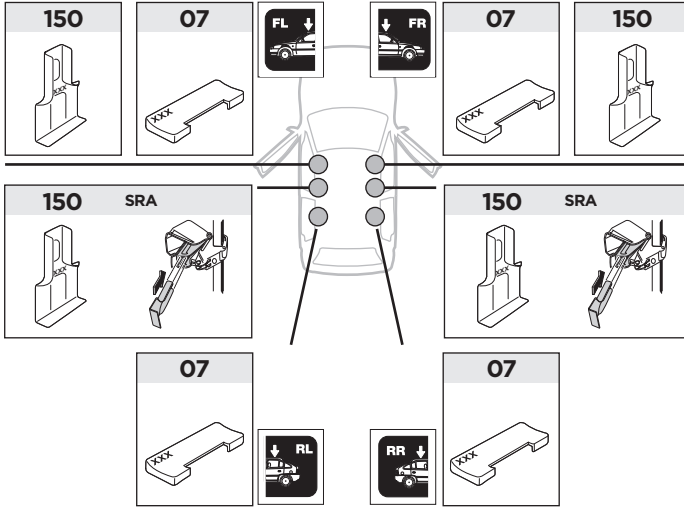
	Y (scale)	Y (mm)	Y (inch)
<b>HONDA Logo</b> , 3-dr Hatchback, 96-01	21,5	866	34 1/8
<b>HONDA Logo</b> , 5-dr Hatchback, 96-01	21	861	33 7/8

2

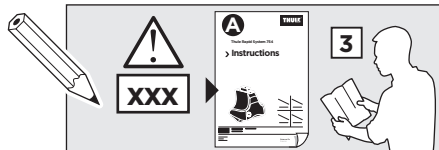
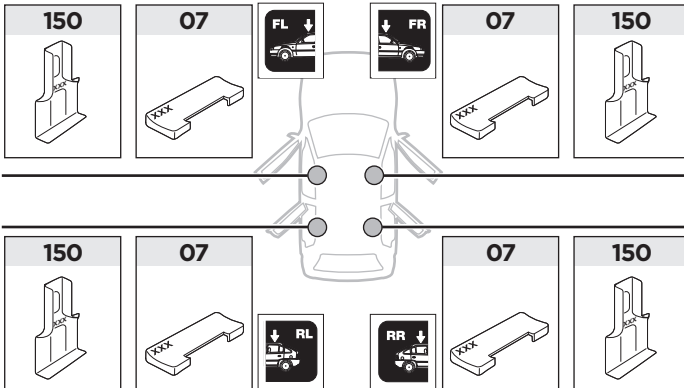
SRA



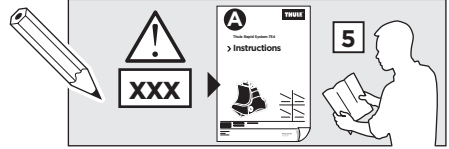
HONDA Logo, 3-dr Hatchback, 96-01



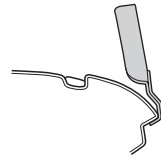
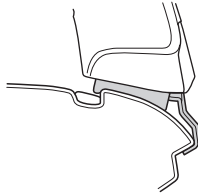
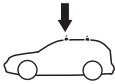
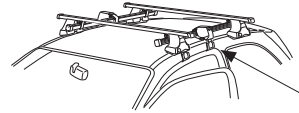
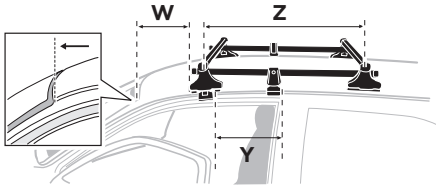
HONDA Logo, 5-dr Hatchback, 96-01



**3**



	W (mm)	Z (mm)	Y (mm)	W (inch)	Z (inch)	Y (inch)
<b>HONDA Logo, 3-dr Hatchback, 96-01</b>	<b>300</b>	<b>700</b>	<b>340</b>	<b>11 6/8</b>	<b>27 1/2</b>	<b>13 3/8</b>



	W (mm)	Z (mm)	W (inch)	Z (inch)
<b>HONDA Logo, 5-dr Hatchback, 96-01</b>	<b>320</b>	<b>700</b>	<b>12 5/8</b>	<b>27 1/2</b>

